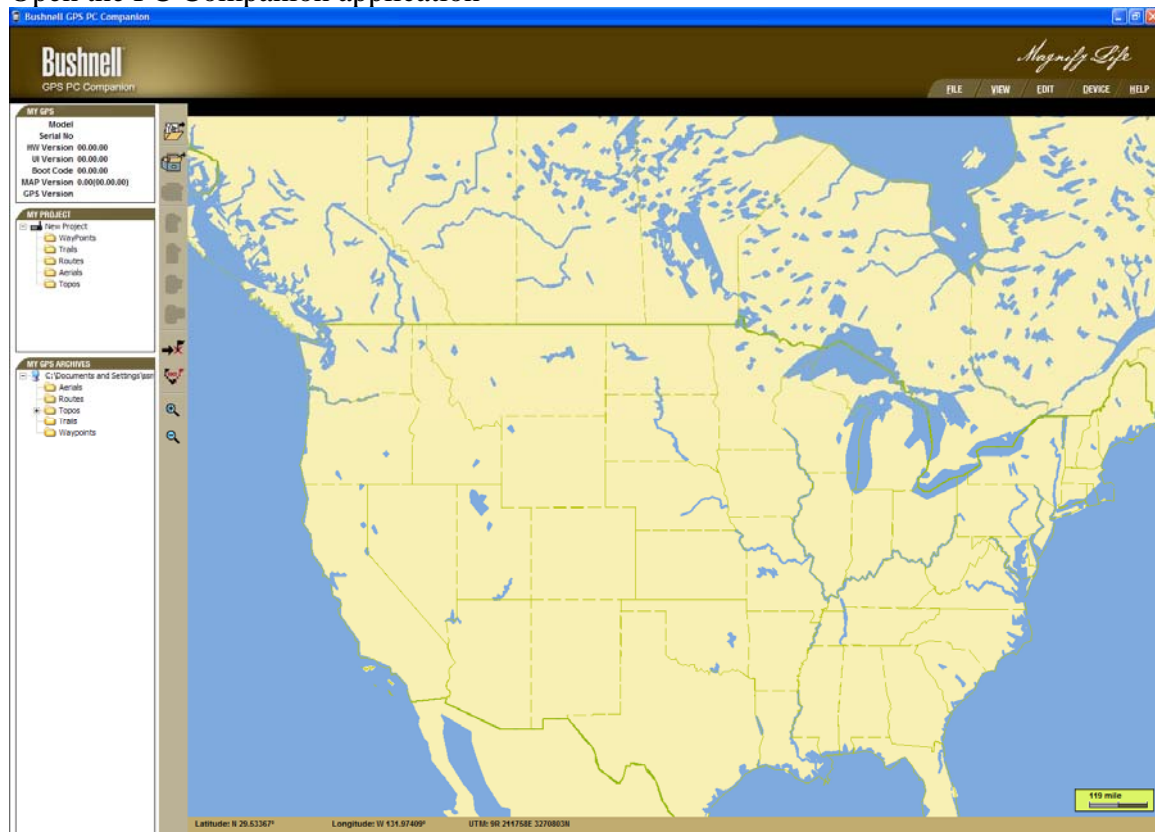
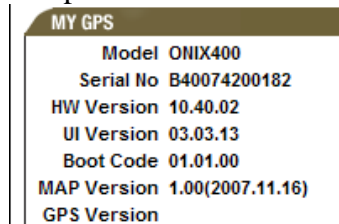


# Transferring maps from PC Companion

Open the PC Companion application

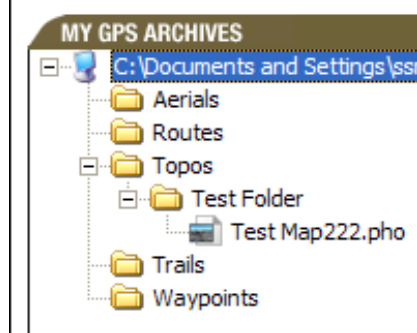


Once the GPS PC Companion application opens we will need to plug in your GPS to the computer.

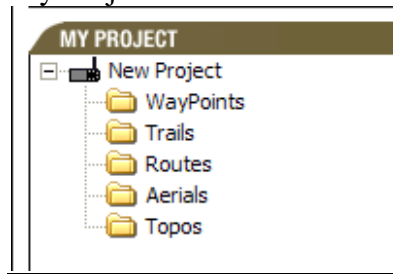


After you have plugged in the GPS you will see in the top right corner the GPS information will appear.

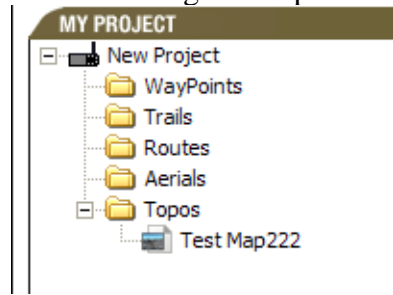
In the lower left corner you will see the My GPS Archives: this is where you maps have been saved.



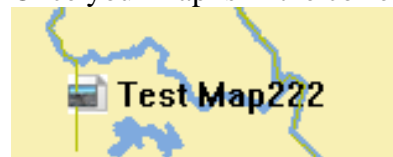
We will now need to take the maps that you would like to transfer to the GPS and place them in My Project.



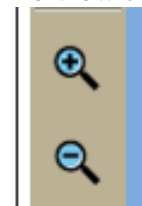
Click and drag the map from the Archives and place it in the corresponding folder in the Project.



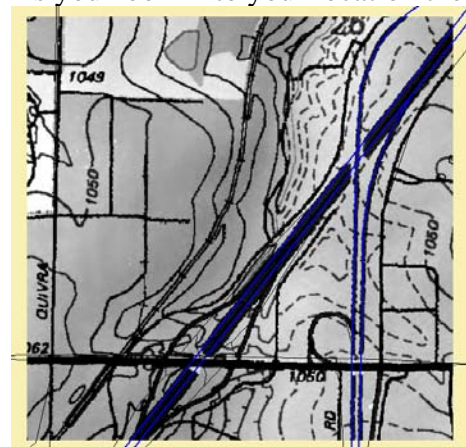
Once your map is in the correct folder it will appear on the US map in the correct location.



To view this map you can zoom into it by using the Zoom Buttons



As you zoom into your location the map that you downloaded will become visible.



If you have all the files in the project that you would like to transfer to the GPS we will now need to hit the Transfer button.



This button will read all of the information from the GPS and place it on your computer.



This button will take everything in the Project and write it to the GPS.



This button will delete everything off of the GPS.

---

Click the Transfer button and you will have a transfer box appear in the center of the screen.



When this box goes away it has completed transferring the map to your GPS.

You now can unplug the GPS to use in the field.

If you are having any problems or questions in transferring the maps please e-mail:

[GPSinfo@bushnell.com](mailto:GPSinfo@bushnell.com)